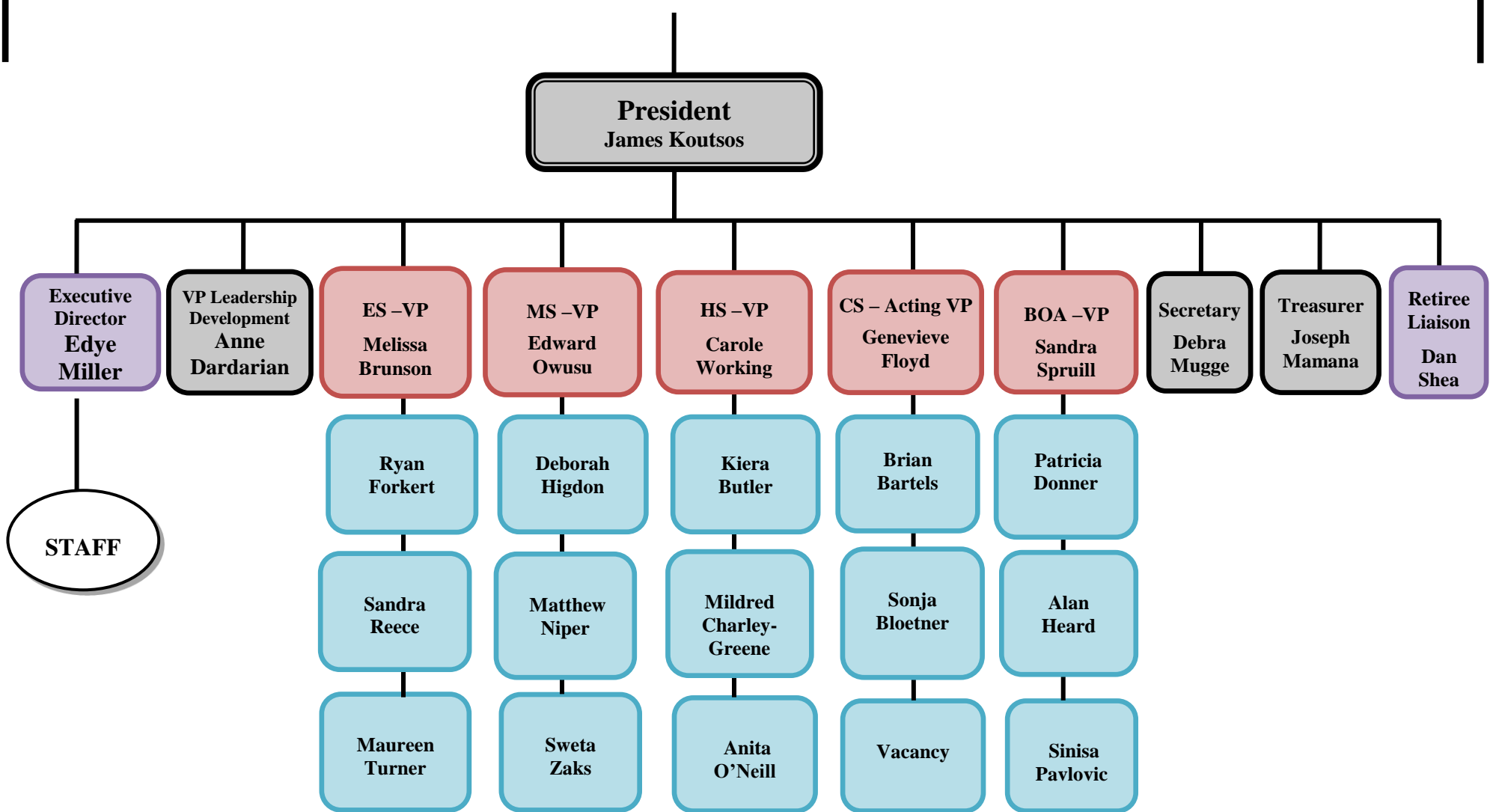


2016-2017 MCAAP & Chapter Cabinets Organization

Members

Board of Directors



| <u>ES Cabinet</u> | <u>MS Cabinet</u> | <u>HS Cabinet</u> | <u>CS Cabinet</u> | <u>BOA Cabinet</u> |
|---|--|--|---|--|
| VP/Chair Melissa Brunson | VP/Chair Edward Owusu | VP/Chair Carole Working | VP/Chair (Acting) Genevieve Floyd | VP/Chair Sandra Spruill |
| Past Chair Not Applicable | Past Chair Not Applicable | Past Chair Not Applicable | Past Chair Not Applicable | Past Chair Not Applicable |
| Assistant Chair Ryan Forkert | Assistant Chair Deb Higdon | Assistant Chair Mildred Charley-Greene | Asst. Chair TBD | Assistant Chair Patricia Donner |
| Recording Secretary Barbara Liess | Recording Secretary Alison Serino | Recording Secretary Ranona Heller | Recording Secretary Rhonda Dillard | Recording Secretary Ozzie Hernandez |
| Treasurer Marita Sherburne | Treasurer Sweta Zaks | Treasurer Deena Levine | Treasurer Susan Chen | Treasurer Judith Yu |
| Program Coordinator Sandra Reece | Program Coordinator Matt Johnson | Program Coordinator Brandi Heckert | Program Coordinator Inger Swimpson | Program Coordinator Charles (Buzz) Lee |
| Principal Rep Amy Bryant | Principal Rep Virginia de los Santos | Principal Rep Billie-Jean Bensen | OCIP Rep Sonja Bloetner | Representatives Barbara Harral |
| Principal Rep Norman Coleman | Principal Rep Robert Sinclair | Principal Rep Joan Benz | OCTO Rep Maryam Ehsassi | Representatives Alan Heard |
| Principal Rep Lee Derby | Principal Rep Nicole Sosik | Principal Rep Leroy Evans | OSFSE Rep Brian Bartels | Representatives Sinisa Pavlovic |
| Principal Rep Michael Simmons | Principal Rep Yolanda Stanislaus | Principal Rep Myriam Yarbrough | OSE Rep Simone Geness | Representatives Lisa Wellek |
| Principal Rep Diantha Swift | AP/ASA/Coord. Rep Shella Cherry | AP/ASA/Coord. Rep Joe Mamana | OSSI/Communication Representative Betty Collins | |
| AP/ASA/Coord. Rep Andy Doerrman | AP/ASA/Coord. Rep Matthew Freiman | AP/ASA/Coord. Rep Anita O'Neill | OHRD/ERSC Rep Heather Dublinske | |
| AP/ASA/Coord. Rep Maureen Turner | At Large Reps Everett Davis | At Large Reps Kiera Butler | OSA Rep Kecia Addison | |
| At Large Reps Dina Brewer | At Large Reps Matthew Niper | At Large Reps William Gregory | At Large Reps Denise Bracalilly Stultz | |
| At Large Reps Joyce Budman | | | At Large Reps Laurie Jenkins | |
| At Large Reps Vicky Casey | | | At Large Reps Dianne Jones | |
| At Large Reps Kelly Morris | | | At Large Reps Lynne Zarate | |
| 16 | 13 | 13 | 15 | 9 |